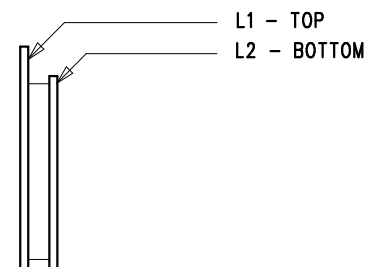


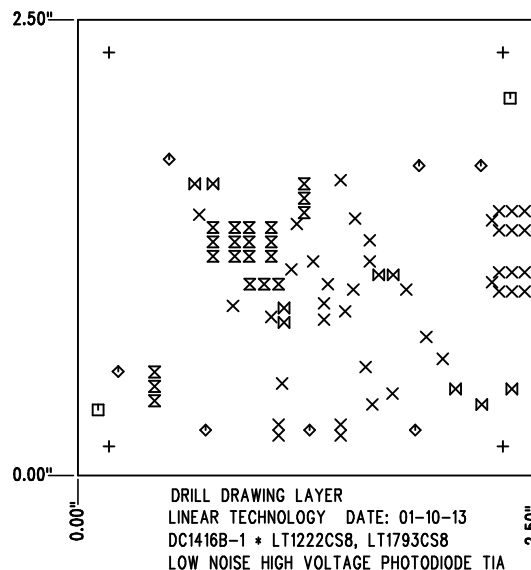
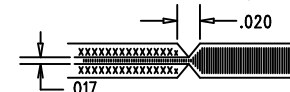
REVISION HISTORY				
ECO	REV	DESCRIPTION	APP. ENG.	DATE
-	1	PRODUCTION	GLEN B.	01-10-13

## LAYER STRUCTURE



## NOTES: UNLESS OTHERWISE SPECIFIED

- FAB PER IPC-A-600.
- MATERIAL: -LEAD FREE ASSEMBLY COMPLIANT, ISOLA FR-370HR OR EQUIVALENT.  
-FINISHED THICKNESS TO BE 0.062" +/- .005"  
-TOTAL OF 2 LAYERS WITH 2 OZ. CU ON THE BOTH LAYERS  
-FLAMMABILITY RATING: 94 V-0 MINIMUM.
- SIZE: CUT TO DIMENSIONS AND TOLERANCES SHOWN.  
0.00" ARE PRIMARY DATUMS.
- DRILLING: -DRILL HOLES PER SCHEDULE. PLATE THROUGH HOLES WITH COPPER, 0.001" THICK MIN.  
-ALL HOLE SIZES ARE SPECIFIED AFTER PLATING.  
-HOLE LOCATION TOLERANCES ARE +/-0.003" IN RELATION TO CENTER
- FINISH: -SMOBC USING LPI BOTH SIDES, COLOR GREEN.  
-GOLD IMMERSION BOTH SIDES.  
-FOR SILKSCREENS: USE WHITE NON-CONDUCTIVE INK.
- DO NOT ALTER ARTWORK e.g. TO ADD LOGO OR DATE CODE.  
PAD SIZE CAN BE MODIFIED TO MEET END FINISH.
- PCBS ARE TO BE RoHS COMPLIANT.
- SCORING FOR PANELIZED PCB (PRODUCTION FAB ONLY):



SIZE	QTY	SYM	PLATED	TOL
0.185	4	+	NO	+/-0.003
0.01	40	X	YES	+/-0.003
0.07	2	□	NO	+/-0.003
0.095	7	◇	YES	+/-0.003
0.031	21	⊗	YES	+/-0.003
0.04	9	⊗	YES	+/-0.003

<b>UNLESS OTHERWISE SPECIFIED</b> DIMENSIONS ARE IN INCHES TOLERANCES: 0.XX" = ±0.01" 0.XXX" = ±0.005" INTERPRET DIM AND TOL PER ASME Y14.5M-1994 THIRD ANGLE PROJECTION 	<b>APPROVALS</b>		<b>LINEAR TECHNOLOGY</b> 1630 MCCARTHY BLVD MILPITAS, CA 95035 PH: (408)432-1900 www.linear.com LTC CONFIDENTIAL- FOR CUSTOMER USE ONLY	
	PCB DES.	AK		
	APP ENG.	GLEN B.	TITLE: FABRICATION DRAWING	
			<b>LOW NOISE HIGH VOLTAGE PHOTODIODE TIA</b>	
	SIZE	IC NO.	LT1222CS8, LT1793CS8	REV
	N/A		DEMO CIRCUIT 1416B	1
SCALE = NONE		FILENAME: DC1416B-1.PCB		SHT 1 OF 1